

Power Button / Status Light: Push down and hold to sync the MimioPad™ wireless pen tablet to the MimioHub™ wireless receiver. Repeat this process to add multiple MimioPad tablets to the same MimioHub receiver.

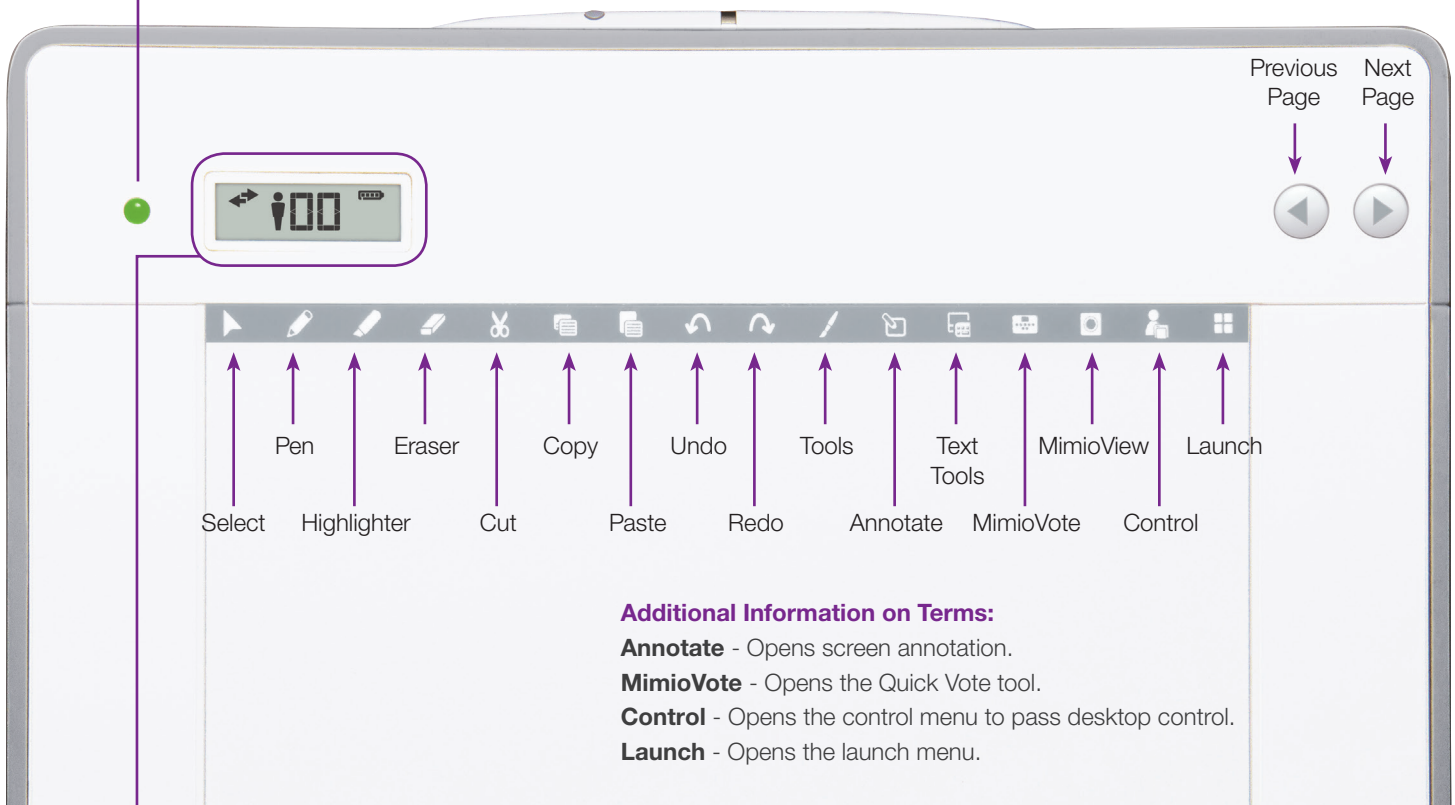
Status Light:

Off - MimioPad tablet is not receiving power or is off.

Solid Green - MimioPad tablet is connected and receiving power; MimioStudio™ software is running.

Flashing Green - MimioPad tablet is connected and receiving power; MimioStudio software is not running.

Solid Amber - MimioPad tablet is connected and receiving power; MimioPad tablet is searching for connection to the MimioHub receiver.



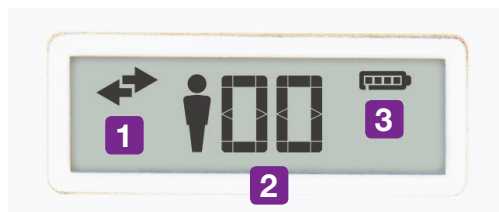
Additional Information on Terms:

Annotate - Opens screen annotation.

MimioVote - Opens the Quick Vote tool.

Control - Opens the control menu to pass desktop control.

Launch - Opens the launch menu.



LED Display:

1 Left arrow – MimioPad tablet is connected to the computer and ready to transfer data.

Right arrow – Stylus is in communication range of the MimioPad tablet.

2 Unit Number - The MimioPad tablets in student mode do not include person icon.

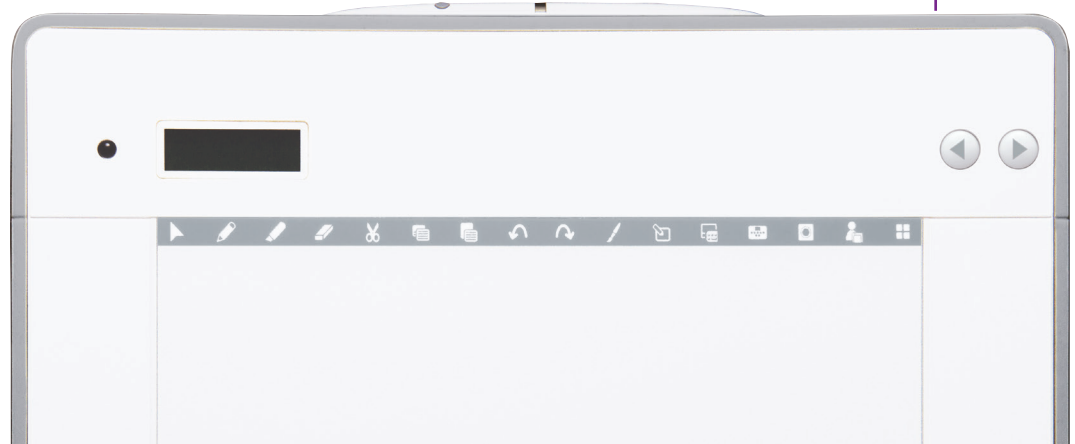
3 Battery Indicator

Hardware Components



Battery-less stylus magnetically attaches at top of the MimioPad tablet.

Stylus button creates Right-Click.



Micro-USB Connection -
Connect to computer to charge.

Control and Collaborate

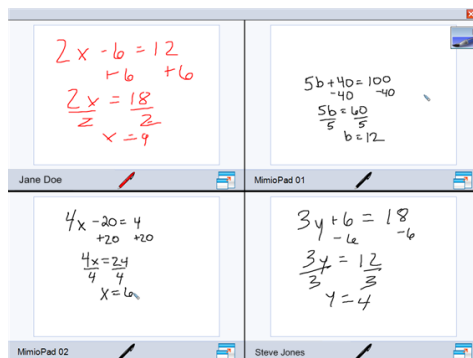
Select any student using a mobile device* equipped with the Mimio-Mobile app or a MimioPad tablet to give control to that student.

Take back control by clicking Control and choosing Teacher device.

Give control to another student by clicking Control and choosing that student's device.

Up to nine mobile devices*, MimioPad tablets, or a combination of each can be connected at once. All will be able to independently use their own whiteboard space, and all Collaborate sessions will be displayed at the front of the classroom.

* Supported Devices: iPad 2 and higher and iPad mini



Collaborate



Make sure you have the latest version of MimioStudio™ software. If not, download it from mimio.com/Support/Downloads.aspx.

Mimio Xi

If wireless indicator light is amber:

1. Plug USB receiver into computer.
2. Make sure Mimio Xi™ device is powered on (power LED is green).
3. Press and hold small button on USB receiver until light begins flashing.
4. On Mimio Xi device, depress the button under power LED using a pen/paperclip, and hold until the device makes a sound.
5. Wireless indicator light on Mimio Xi device should turn green.

Press FIRST while connected to computer



USB receiver

Power LED
Press SECOND until Mimio device makes sound

Wireless indicator



MimioTeach

If status button is amber:

1. Make sure MimioHub™ wireless receiver is connected to computer.
2. Open MimioStudio > Tools > Settings. Choose Classroom Devices.
3. MimioHub receiver should be listed as "Connected." If not, move it to an active USB port.
4. On the MimioTeach™ device, press and hold down the power/status button for 5-10 seconds, until it begins to blink.
5. Status button will flash amber, and the MimioTeach device should appear in the list of available Classroom Devices.
6. Select "MimioTeach" and click "Connect." Status button should be solid green.

MimioHub



Status button / Power



MimioVote

If status button is amber:

1. Use the same MimioHub receiver to connect BOTH your MimioTeach device (if available) and the MimioVote™ assessment.
2. Open MimioStudio > Tools > Settings. Choose Classroom Devices.
3. MimioHub receiver should be listed as “Connected.” If not, move it to an active USB port.
4. On the MimioVote charging tray, press and hold down the status button for 5-10 seconds, until it begins to blink.
5. Status button will flash amber, and MimioVote device should appear in the list of available Classroom Devices.
6. Select “MimioVote” and click “Connect.” Status button should be solid green.



Status button

MimioPad (1st generation)

If 000 is blinking on the MimioPad display:

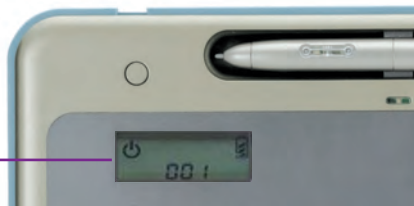
1. Plug USB receiver into computer.
2. Make sure MimioPad™ device is powered on.
3. On the USB receiver, press and hold the button until it begins flashing.
4. On the back of the MimioPad device, press the red button. The MimioPad display should show the unit number (not zero).
5. To connect multiple MimioPad devices, repeat the process for each MimioPad device.

Press **FIRST** while connected to computer



USB receiver

MimioPad display

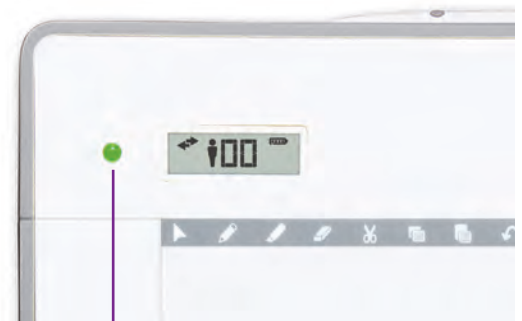


Press **SECOND**

NEW MimioPad

If status button is amber:

1. Make sure the MimioHub wireless receiver is connected to computer.
2. Open MimioStudio > Tools > Settings. Choose Classroom Devices.
3. The MimioHub receiver should be listed as “Connected.” If not, move it to an active USB port.
4. On the MimioPad tablet, press and hold down the power/status button for 5-10 seconds, until it begins to blink.
5. Status button will flash amber, and the MimioPad device should appear in the list of available Classroom Devices.
6. Select “MimioPad” and click “Connect.” Status button should be solid green.
7. To connect multiple MimioPad devices, repeat the resync process for each. Devices should appear in “Tablet Devices” in the MimioStudio Settings.



Status button / Power